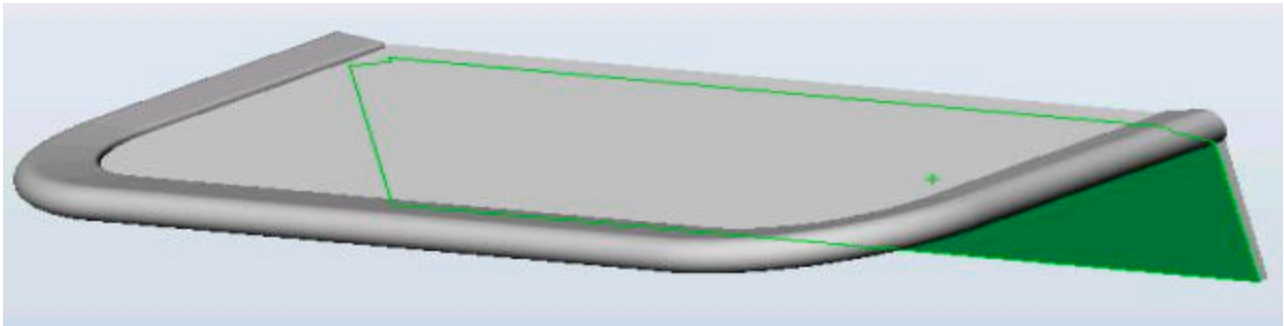


## **ADDING TRIM STRIP TO WIND DEFLECTOR ON REPLACEMENT CANOPY OF OMEGA AWNINGS**



**If replacing the canopy on an Omega awning that utilizes a wind deflector, install the supplied trim strip along the edge of the wind deflector as show. This will prevent the fabric from tearing as it overlaps the sharp edge of the deflector.**